

Flying Schedule

Friday 25th June 2010

Local

13.00	Registration (all classes)	Pilots Room next to Reception
14.00	Briefing (Beginners +Advanced)	ditto
14.45	Beginners	Known Compulsory sequence
	Advanced	Known
	Advanced	publish of Unknown as AdvK starts
18.00	LAST AEROBATICS FLIGHT	

Saturday 26th June 2010

Local

08.00	Briefing (Intermediate +Advanced)	Pilots Room next to Reception
08.30	Airfield Opens for Flying	
09.00	Advanced	Unknown
	Intermediate	Free
	Advanced	Free
	Intermediate	Apprentices
19.00	LAST AEROBATICS FLIGHT	
19.00	Presentations	
ish	Beginners	BAeA plaque
	Intermediate	BAeA medals for Free Air Squadron Trophy for Apprentices
	Advanced	Don Henry Trophy BAeA medals
20.00	Latest Departure	AFTER PAYING ALL BILLS

Contest & Airfield Officials

Airfield	Clive Hughes Emma Hughes	01747 811 767
Contest Director	Patrick JG Margetson-Rushmore	07879 88 22 55
Chief Judge	Luke Goddard	07976 570 372
Registrar & Scorer	Jen Buckenham	07905 893 480

Airfield Information

OPERATIONS: Runway 26/08 803m x 30m. Avoid overflying villages in the vicinity of the aerodrome. Arrive Friday if at all possible, as an early start to flying on Saturday is essential

Designator:	EGHA	Elevation:	810 feet
Radio:	122.70	Co-ordinates:	N50° 58.0', W002° 09.1'
LARS:	Boscombe 126.70	Location:	2.7nm S Shaftsbury

Follow noise abatement procedures (see attached last page) – if in doubt ring airfield before home departure
 NO arrivals without PPR
 NO arrivals after 19.00 on Friday
 NO arrivals on Saturday before 08.30 (i.e. after expected briefing has started)
 NO aerobatic flights after 19.00
 NO departures after 20.00 on Saturday

Hangarage is limited – 1st come 1st served. Contact for places in advance to airfield required.
 Fuel is via a Chitty System – explained at briefing.
 Oil - available
 Food – perfect as always from Margaret – order early as it will be busy – order at OPS for “fast track”
 Maintenance – None at airfield – but Duty engineer available on call

Airfield Fees - £20 per aircraft for the week-end
 Payment – pay at the end of the competition BEFORE you fly off – cash or credit cards (no cheques)

If you have any questions please contact Emma or Clive Hughes.

Other Information

There will be a full briefing at 14.00 on the Friday for Beginners and Advanced and a further full briefing at 08.00 on Saturday for Intermediate and Advanced.

The anticipated programme is as attached overleaf – page 3. At the CD's discretion this may be varied – e.g. expected/actual cloudbase.

Operating Regulations

Circuit Pattern – during the competition there will be **no Overhead joins** and circuit patterns are split. Non aerobatic traffic will operate to the South of the field (26 LH or 08 RH). During the aerobatic competition aerobatic competition circuit pattern is to the North of the field (26 RH or 08 LH). Aircraft using the North circuit must ALWAYS GIVE WAY to South circuit aircraft. Aerobatic aircraft may land using either circuit pattern (calling as appropriate) If in doubt ASK.

Aerobatic Traffic Taking Off – it is not intended to use a hold during the competition. Once cleared for Take off aerobatic traffic should climb out and up on the North side of the airfield. If using runway 26 aircraft must avoid the village of Compton Abbas turning right before hand or after the village.

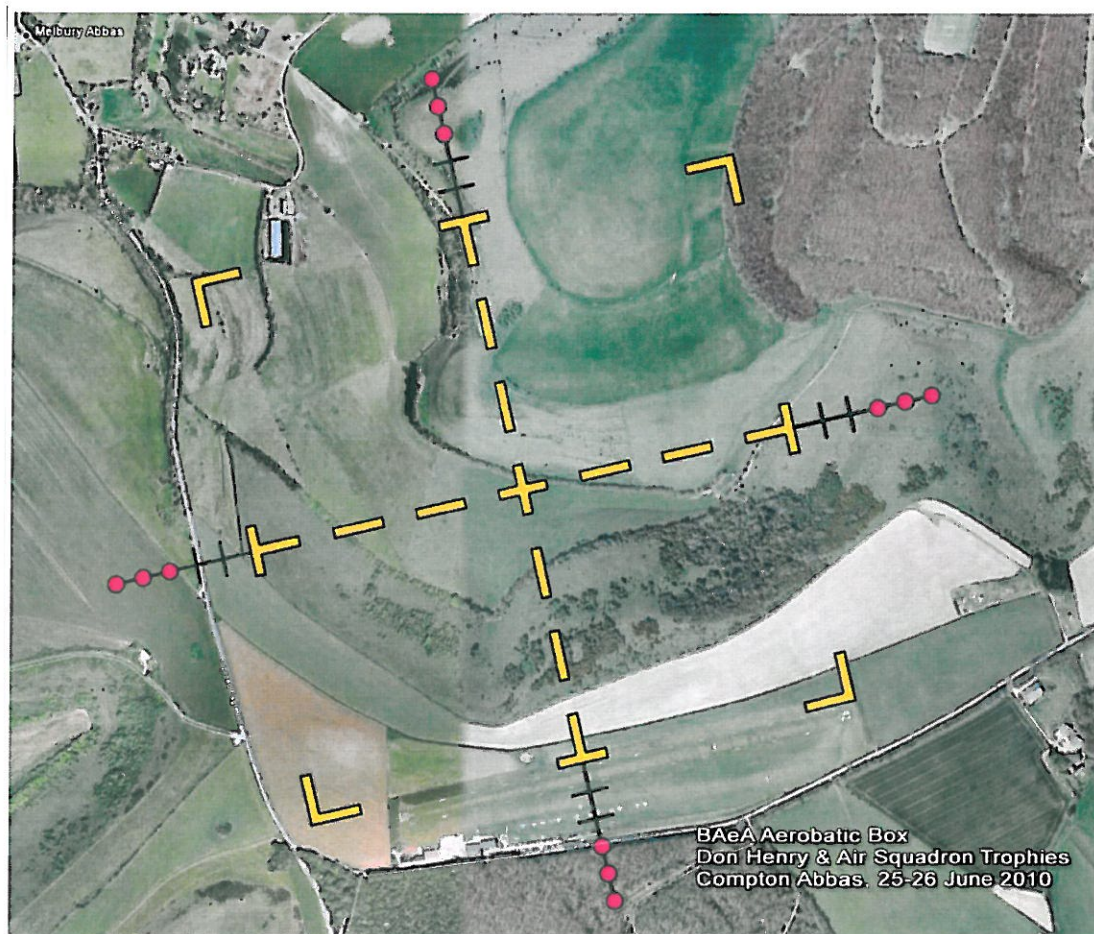
Aerobatic Traffic Landing – as noted above in circuit pattern above.

Radio Procedure during Competition – will be explained at briefing.

Other – Public Right of Way – there is a PRW across the runway. From ½ way pedestrians can cross the runway and walk along the top of the ridge westward before heading off North from about the wind sock. Please be aware of this on all arrivals and departures. This will be explained at Briefing.

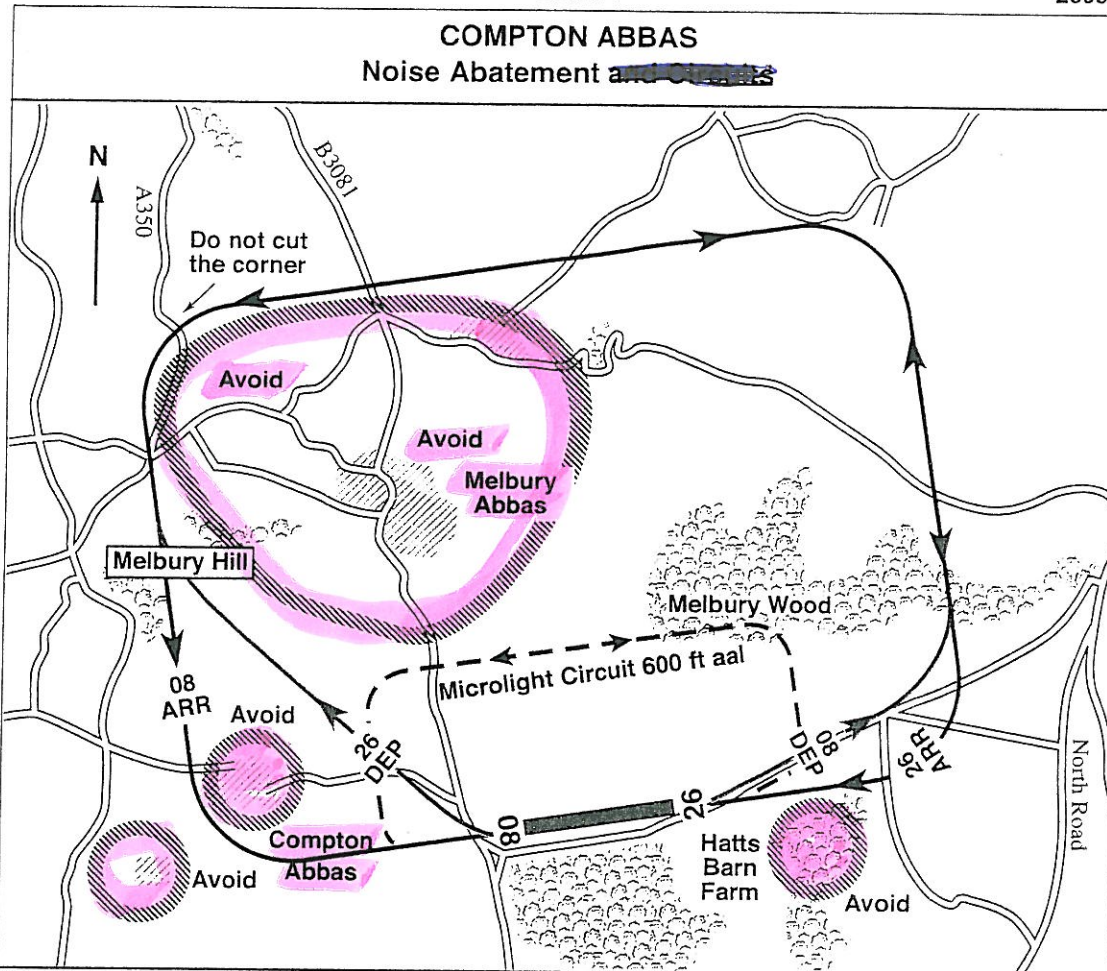
Aerobatic Performance Zone

The APZ is as shown below. There will be no box markers. Make use of the road for the West line of the box – for East you can make reference to the end of the runway with the 26 markings. There are farm building just before the edge of the North Western corner of the box. Judges will be positioned at/around the radio mast some xxx metres from the clubhouse, roughly ½ way between the runway. There will be a white J marker indicating where the Judges are. Remember the airfield is situated on hill and ground level of the box is some 700 feet below the runway – DO NOT BE LOW HEADING TOWARDS THE RUNWAY.



EGHA

2009



The airfield operates in an area of outstanding natural beauty, and to maintain the existing good relationship with the community, please observe good airmanship and avoid overflying hamlets and villages in close proximity to the airfield.

Arrivals:

Rwy 08 - A normal approach, but please avoid getting low on final approach or using excessive power settings when overflying Compton Village.

Rwy 26 - A normal approach.

Departures:

Rwy 08 - As soon as practicable, on passing the end of the runway, turn left in order to avoid overflying Hatts Barn Farmhouse.

Rwy 26 - As soon as practicable, on passing the end of the runway, turn right in order to cross the top of the Melbury Hill. Avoid overflying any part of Compton Abbas village.